

**T R I D E N T**

SERVICE THAT MATTERS



## VISION

### "EMPOWERING SUSTAINABLE OPERATIONS"

TRIDENT is committed to delivering exceptional onshore and offshore services that exceed our clients' expectations. Our vision is to be the trusted partner of choice for companies operating in the energy, maritime, and construction industries, and to make a positive impact on the environment and the communities we serve.

**"SERVICE THE MATTERS"**

# ABOVE WATER SERVICES

Regular cleaning and maintenance of above-waterline areas help prevent the buildup of contaminants such as dirt and salt, which can accelerate corrosion. Corrosion threatens the vessel's structural integrity, potentially resulting in costly repairs and safety risks. By keeping these surfaces clean, you preserve the ship's condition, extend its lifespan, and ensure both safety and optimal performance.



Above water cleaning



## Importance of above water cleaning

All vessels sailing to New Zealand and Australia are required to comply with MPI/NZ regulations; the above water line are considered as niche area hence it is mandatory to be completely free from.

## Equipments used for above water cleaning

Our adjustable high pressure seawater jet spray system ensures the best possible removal and cleaning effect during all procedures for surface treatments up to 400 Bar, with minimal to no harm to the paint coatings. We will be able to carry out the Above waterline jobs in Singapore Anchorage (non bunkering anchorage) as well as Outer Port Limits (OPL)



# UNDERWATER SERVICES

## Underwater services that we provide :

- In Water Hull Cleaning
- ROV Inspection
- MPI / NZ Requirement
- IWS/UWILD
- Propeller Cleaning & Polishing
- In Water Minor Repairs
- Plugging, Blanking, Cofferdam, Hot Works



Cofferdam installation



Before Hull Cleaning



After Hull Cleaning

## Importance & Benefit of A Clean Hull

- Improved Fuel Efficiency
- Increased Speed
- Cost Savings
- Environmental Benefits
- Extended Hull Life
- Reduced Maintenance
- Enhanced Performance
- Compliance with Regulations



Before Propeller Polishing



After Propeller Polishing

## Propeller Polishing

Our divers are highly trained to deliver a flawless Rupert Scale A finish on every propeller. Using 3M pads, we remove imperfections and biofouling, ensuring a smooth surface of 0.4 microns for maximum efficiency. Each propeller is left free of nicks and defects.

# OIL BOOMS



At Trident Services, we specialize in creating fully customizable oil booms to meet the unique requirements of your operation. Whether it's for marine, harbor, or offshore applications, our booms are designed to offer maximum effectiveness and durability.

Our oil booms are constructed from high-quality materials that are resistant to oil, water, and UV damage. Reinforced with durable anchoring points and equipped with high-visibility markings, our booms ensure reliable containment and easy maintenance.

## Features:

**Durable Materials:** Unique substrate compound of synthetic rubber with a CSM (Hypalon) external skin.

**Customizable Designs:** Tailored to your operational needs with multiple sizes, colors, and configurations available.

**Versatile Application:** Suitable for marine environments, harbors, offshore oil spills, and permanent installations.

## Training for Oil Boom Deployment

Trident Services also offers hands-on training for your team, ensuring proper deployment of oil booms in various conditions. Our training is designed to maximize safety and efficiency, helping you protect sensitive environments.

## Maintenance Services

Already using oil booms? We provide comprehensive maintenance services to keep your equipment in optimal condition. From routine inspections to necessary repairs, we make sure your oil booms are always ready for action.

# ADVANCED INSPECTION SOLUTIONS



CCTV Inspection

Trident Services offers cutting-edge inspection solutions for a wide range of industrial applications:

- > Confined Space
- > Aerial Structures
- > Inwater Inspections

Our advanced technologies deliver precise, reliable results for even the most complex inspection needs.

We utilize high-resolution CCTV for remote inspections, detecting blockages, cracks, corrosion, and other structural issues, ensuring safe assessments without the need for manual entry. We can inspect a variety of locations, including:

- Tanks
- Chimneys
- Box Culverts (over 1 meter)
- Sewer Lines (over 1 meter)
- Spillways
- Piperacks (DWG to BIM for plant expansion)
- Cement
- Silos
- Roof & Bridge Structures
- Pipes (225mm to 1500mm)

## Aerial Drone Inspection :

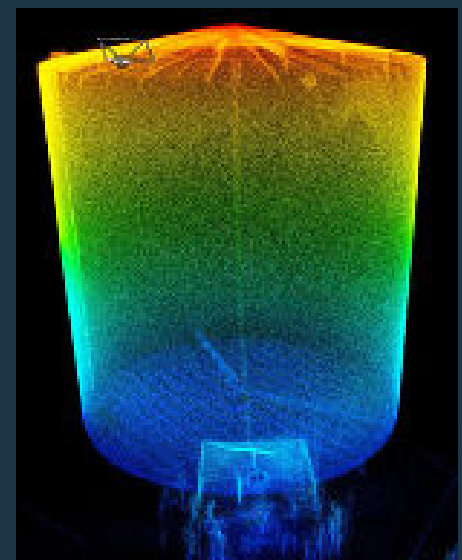
Our drones offer efficient aerial inspections using high-definition cameras, thermal imaging, and LIDAR technology to capture detailed data for structural assessments, damage detection, and environmental analysis.



Pipe Racks



Water Tank



Oil Tank Lidar

# CONTACT US

 **SINGAPORE**

No 2 Venture Drive #14-31  
Vision Exchange Singapore 608526  
Office : +65 6980 6994

 **MALAYSIA**

S0 29-3A Menara 1, No 3  
Jalan Bangsar KL Eco City Kuala Lumpur  
59200  
Office +603 22018969



[enquiries@trident-us.com](mailto:enquiries@trident-us.com)



[www.tridentservices.sg](http://www.tridentservices.sg)



<http://linkedin.com/in/trident-services>